

APPENDIX TABLE OF CONTENTS

Photographs Taken by Amici Curiae	1a
---	----

PHOTOGRAPHS TAKEN BY AMICI CURIAE¹

**Trash, fire debris at a
vacated encampment in Portland, Oregon**



¹ The photographs in this appendix were taken by Amici and their members.

**Trash left behind at homeless encampment
in Pendleton, Oregon**



Encampment in Beaverton, Oregon



Campsite in Portland, Oregon



Campsite in Spokane, Washington



Campsite in Portland, Oregon



**Needles and trash from a campsite cleanup
in Pendleton, Oregon**



App.5a

**Trash and camping equipment left behind
in Sweet Home, Oregon**



App.6a

**Recreational and other vehicles,
makeshift structures on private property
in Airway Heights, Washington**



Bridge abutment in Klamath Falls, Oregon that has been excavated and used as an encampment



**Semi-permanent camping structure and tent on
Central Oregon Transportation District property**



App.9a

**Fire started by unpermitted campers
that damaged irrigation infrastructure at
Klamath Irrigation District**



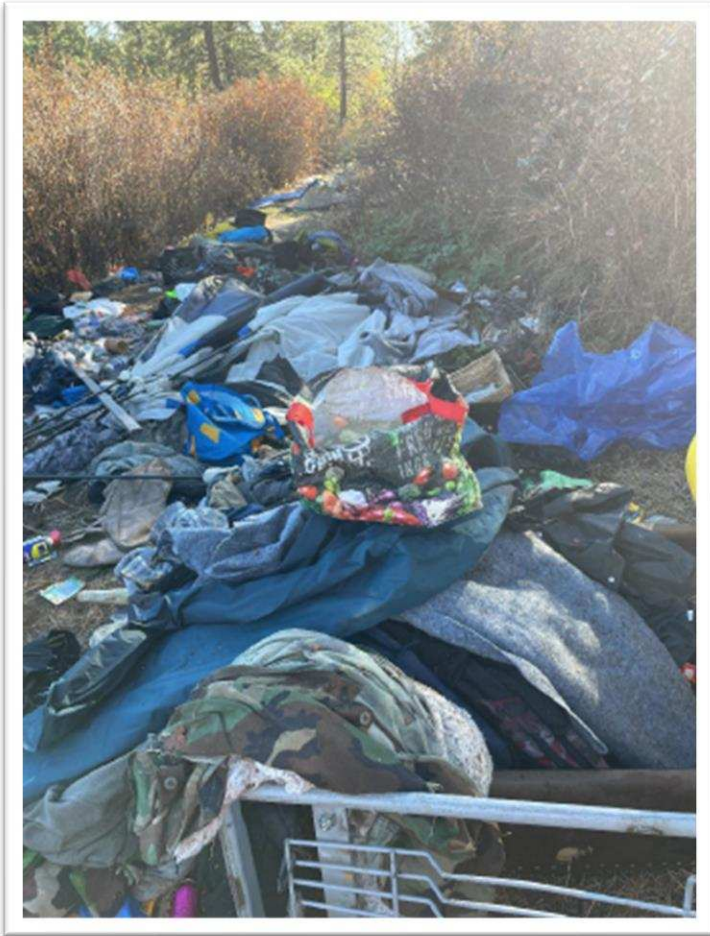
App.10a

Encampment fire left burning in multiple locations in Umatilla County Fire District No. 1



App.11a

**Abandoned possessions strewn along a paved
40-mile pedestrian and non-motorized vehicle
trail in Spokane Valley, Washington**



Garbage and debris collected from homeless encampment near Spokane, Washington



Homeless encampment in Portland, Oregon

